

Planning Permit No. 115/34/2015/33
APPROVED
 SUBJECT TO THE CONDITIONS IN THIS OFFICE LETTER.
 16-05-2015
 FOR MEMBER SECRETARY
 MADRAS METROPOLITAN
 DEVELOPMENT AUTHORITY
 NO. 600, 600 OOS.

AREAS	SQFT	SQMS
SITE AREA	11100.0	1032.0
GROUND FLOOR AREA	2572.19	248.5
FIRST FLOOR AREA	4400.44	409.2
SECOND FLOOR AREA	4400.44	409.2
THIRD FLOOR AREA	4256.59	396.1
TOTAL FLOOR AREAS	15731.76	1463.1

F.S.L. 1.42 COVERAGE 38.29%

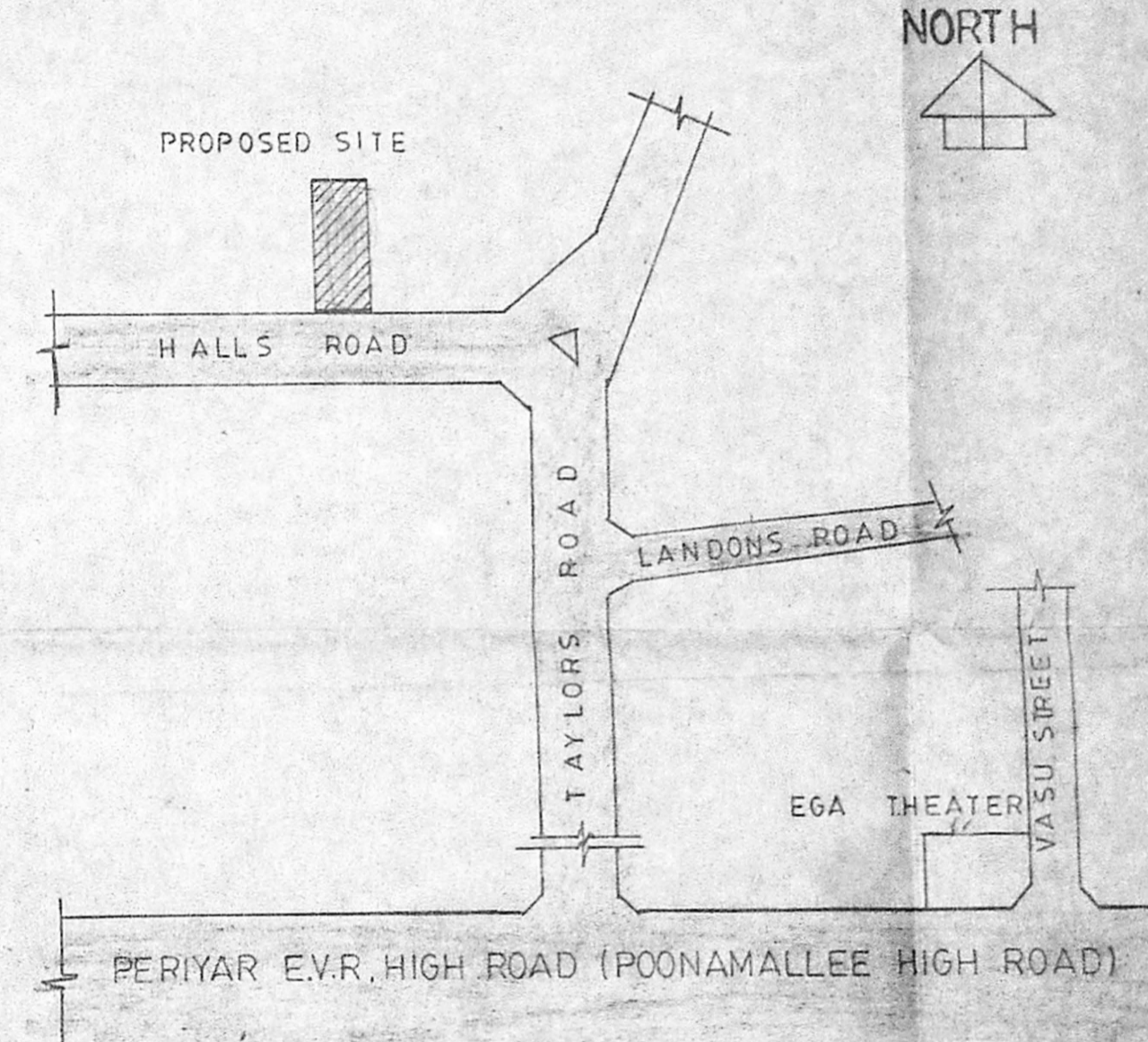
COLOUR INDEX

PROPOSED	---
ROAD	---
BOUNDARY	---
SEWER LINE	---
WATER LINE	---

DRAWN - P.VENKATARAMAN
 DATE - 16/5/90
 SCALE - 0.1" = 8'-0"

SCHEDULE OF JOINERY

TYPE	WIDTH	HEIGHT	DESCRIPTION
D	4'-0"	7'-0"	T.V. PANELLED DOOR
D1	3'-0"	7'-0"	T.V. PANELLED DOOR
D2	2'-0"	7'-0"	T.V. PANELLED DOOR
D3	2'-0"	7'-0"	T.V. PANELLED DOOR
D4	2'-0"	7'-0"	T.V. PANELLED DOOR
D5	2'-0"	7'-0"	T.V. PANELLED DOOR
D6	2'-0"	7'-0"	T.V. PANELLED DOOR
D7	2'-0"	7'-0"	T.V. PANELLED DOOR
D8	2'-0"	7'-0"	T.V. PANELLED DOOR
D9	2'-0"	7'-0"	T.V. PANELLED DOOR
D10	2'-0"	7'-0"	T.V. PANELLED DOOR
D11	2'-0"	7'-0"	T.V. PANELLED DOOR
D12	2'-0"	7'-0"	T.V. PANELLED DOOR
D13	2'-0"	7'-0"	T.V. PANELLED DOOR
D14	2'-0"	7'-0"	T.V. PANELLED DOOR
D15	2'-0"	7'-0"	T.V. PANELLED DOOR
D16	2'-0"	7'-0"	T.V. PANELLED DOOR
D17	2'-0"	7'-0"	T.V. PANELLED DOOR
D18	2'-0"	7'-0"	T.V. PANELLED DOOR
D19	2'-0"	7'-0"	T.V. PANELLED DOOR
D20	2'-0"	7'-0"	T.V. PANELLED DOOR
D21	2'-0"	7'-0"	T.V. PANELLED DOOR
D22	2'-0"	7'-0"	T.V. PANELLED DOOR
D23	2'-0"	7'-0"	T.V. PANELLED DOOR
D24	2'-0"	7'-0"	T.V. PANELLED DOOR
D25	2'-0"	7'-0"	T.V. PANELLED DOOR
D26	2'-0"	7'-0"	T.V. PANELLED DOOR
D27	2'-0"	7'-0"	T.V. PANELLED DOOR
D28	2'-0"	7'-0"	T.V. PANELLED DOOR
D29	2'-0"	7'-0"	T.V. PANELLED DOOR
D30	2'-0"	7'-0"	T.V. PANELLED DOOR
D31	2'-0"	7'-0"	T.V. PANELLED DOOR
D32	2'-0"	7'-0"	T.V. PANELLED DOOR
D33	2'-0"	7'-0"	T.V. PANELLED DOOR
D34	2'-0"	7'-0"	T.V. PANELLED DOOR
D35	2'-0"	7'-0"	T.V. PANELLED DOOR
D36	2'-0"	7'-0"	T.V. PANELLED DOOR
D37	2'-0"	7'-0"	T.V. PANELLED DOOR
D38	2'-0"	7'-0"	T.V. PANELLED DOOR
D39	2'-0"	7'-0"	T.V. PANELLED DOOR
D40	2'-0"	7'-0"	T.V. PANELLED DOOR
D41	2'-0"	7'-0"	T.V. PANELLED DOOR
D42	2'-0"	7'-0"	T.V. PANELLED DOOR
D43	2'-0"	7'-0"	T.V. PANELLED DOOR
D44	2'-0"	7'-0"	T.V. PANELLED DOOR
D45	2'-0"	7'-0"	T.V. PANELLED DOOR
D46	2'-0"	7'-0"	T.V. PANELLED DOOR
D47	2'-0"	7'-0"	T.V. PANELLED DOOR
D48	2'-0"	7'-0"	T.V. PANELLED DOOR
D49	2'-0"	7'-0"	T.V. PANELLED DOOR
D50	2'-0"	7'-0"	T.V. PANELLED DOOR
D51	2'-0"	7'-0"	T.V. PANELLED DOOR
D52	2'-0"	7'-0"	T.V. PANELLED DOOR
D53	2'-0"	7'-0"	T.V. PANELLED DOOR
D54	2'-0"	7'-0"	T.V. PANELLED DOOR
D55	2'-0"	7'-0"	T.V. PANELLED DOOR
D56	2'-0"	7'-0"	T.V. PANELLED DOOR
D57	2'-0"	7'-0"	T.V. PANELLED DOOR
D58	2'-0"	7'-0"	T.V. PANELLED DOOR
D59	2'-0"	7'-0"	T.V. PANELLED DOOR
D60	2'-0"	7'-0"	T.V. PANELLED DOOR
D61	2'-0"	7'-0"	T.V. PANELLED DOOR
D62	2'-0"	7'-0"	T.V. PANELLED DOOR
D63	2'-0"	7'-0"	T.V. PANELLED DOOR
D64	2'-0"	7'-0"	T.V. PANELLED DOOR
D65	2'-0"	7'-0"	T.V. PANELLED DOOR
D66	2'-0"	7'-0"	T.V. PANELLED DOOR
D67	2'-0"	7'-0"	T.V. PANELLED DOOR
D68	2'-0"	7'-0"	T.V. PANELLED DOOR
D69	2'-0"	7'-0"	T.V. PANELLED DOOR
D70	2'-0"	7'-0"	T.V. PANELLED DOOR
D71	2'-0"	7'-0"	T.V. PANELLED DOOR
D72	2'-0"	7'-0"	T.V. PANELLED DOOR
D73	2'-0"	7'-0"	T.V. PANELLED DOOR
D74	2'-0"	7'-0"	T.V. PANELLED DOOR
D75	2'-0"	7'-0"	T.V. PANELLED DOOR
D76	2'-0"	7'-0"	T.V. PANELLED DOOR
D77	2'-0"	7'-0"	T.V. PANELLED DOOR
D78	2'-0"	7'-0"	T.V. PANELLED DOOR
D79	2'-0"	7'-0"	T.V. PANELLED DOOR
D80	2'-0"	7'-0"	T.V. PANELLED DOOR
D81	2'-0"	7'-0"	T.V. PANELLED DOOR
D82	2'-0"	7'-0"	T.V. PANELLED DOOR
D83	2'-0"	7'-0"	T.V. PANELLED DOOR
D84	2'-0"	7'-0"	T.V. PANELLED DOOR
D85	2'-0"	7'-0"	T.V. PANELLED DOOR
D86	2'-0"	7'-0"	T.V. PANELLED DOOR
D87	2'-0"	7'-0"	T.V. PANELLED DOOR
D88	2'-0"	7'-0"	T.V. PANELLED DOOR
D89	2'-0"	7'-0"	T.V. PANELLED DOOR
D90	2'-0"	7'-0"	T.V. PANELLED DOOR
D91	2'-0"	7'-0"	T.V. PANELLED DOOR
D92	2'-0"	7'-0"	T.V. PANELLED DOOR
D93	2'-0"	7'-0"	T.V. PANELLED DOOR
D94	2'-0"	7'-0"	T.V. PANELLED DOOR
D95	2'-0"	7'-0"	T.V. PANELLED DOOR
D96	2'-0"	7'-0"	T.V. PANELLED DOOR
D97	2'-0"	7'-0"	T.V. PANELLED DOOR
D98	2'-0"	7'-0"	T.V. PANELLED DOOR
D99	2'-0"	7'-0"	T.V. PANELLED DOOR
D100	2'-0"	7'-0"	T.V. PANELLED DOOR



- OUTLINE SPECIFICATION**
- SAND FILLING FOR FOUNDATION AND DISCREET FILLING FOR FOUNDATION AND P.C.C. 1:4:8 FOR FLOORING.
 - R.C.C. 1:2:4 FOR COLUMN, BEAMS, SLAB, BEAM AND BRIDGE.
 - CONCRETE FOR BASEMENT, PAVEMENT, PARAPET AND PARAPET STEPS IN CH. 1:2:4.
 - PLASTERING IN CH. 1:2:4 FOR CEILING AND BRICKWORK IN CH. 1:2:4 FOR WALLS.
 - TEAK WOOD FOR ROOF AND WINDOW DOOR L.C. OVER R.C. SLAB WITH ONE LAYER OF PRESSURE TREATED OVER D.P.L.C.

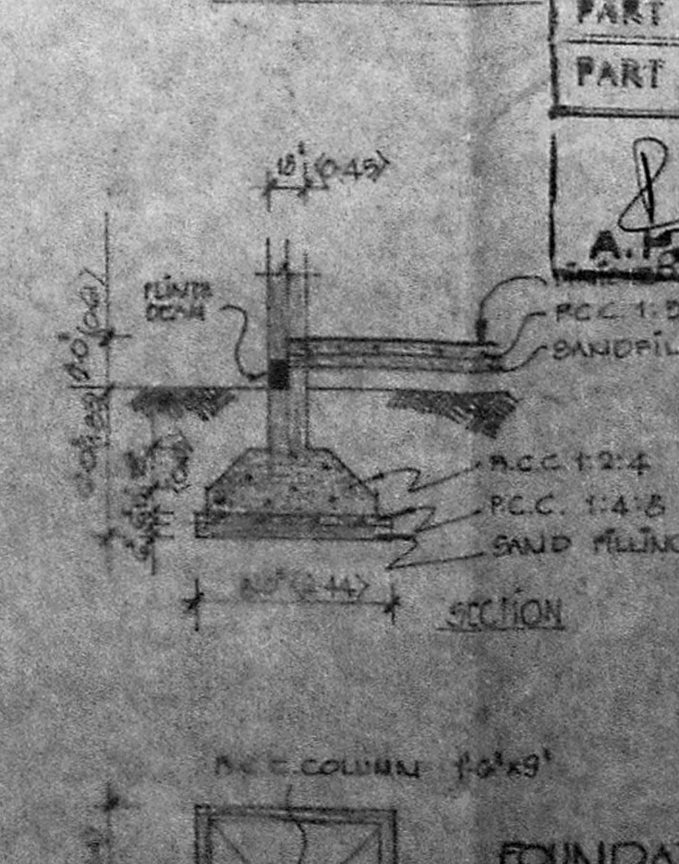
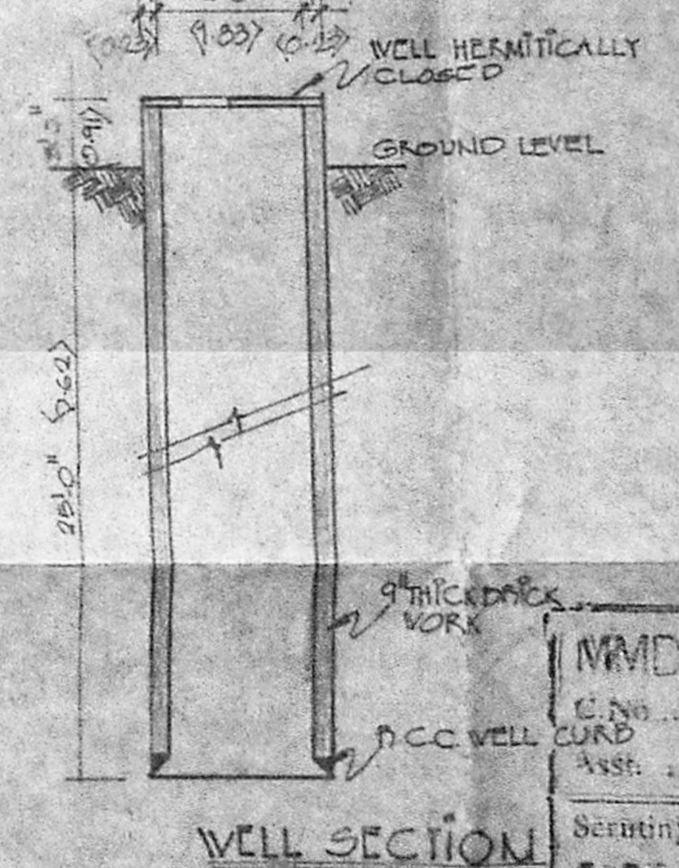
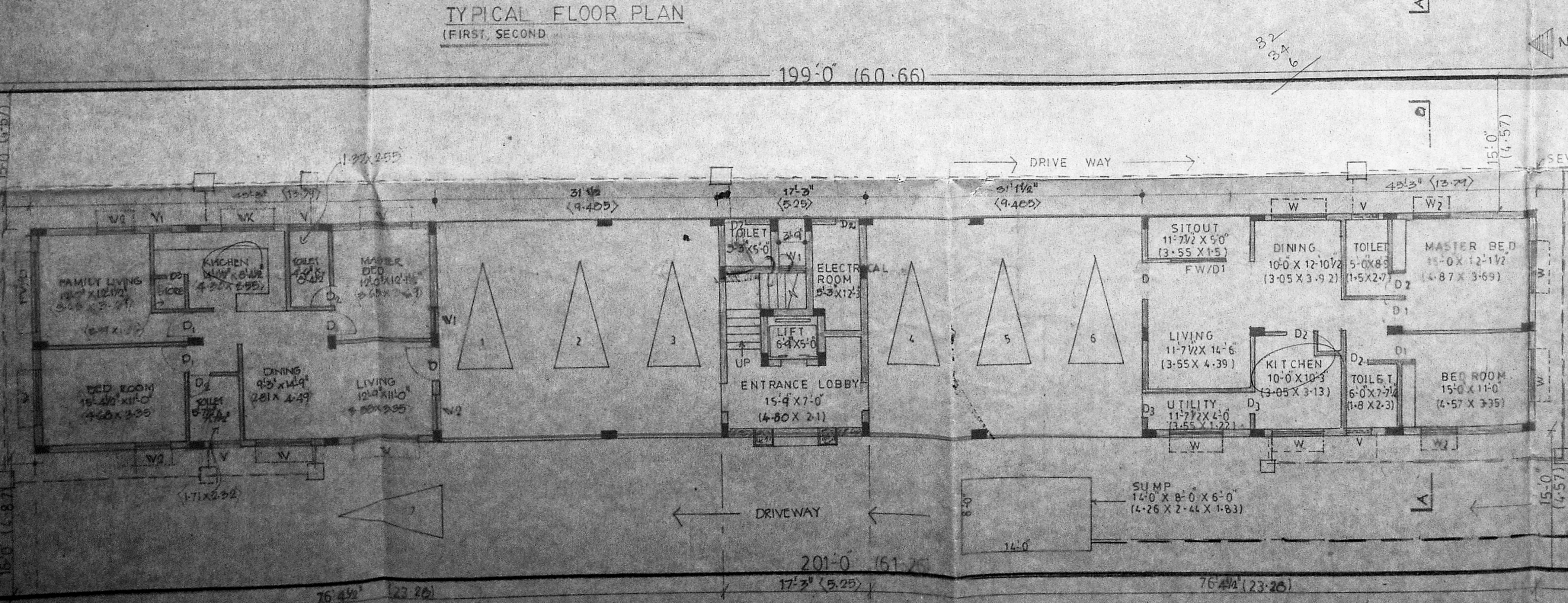
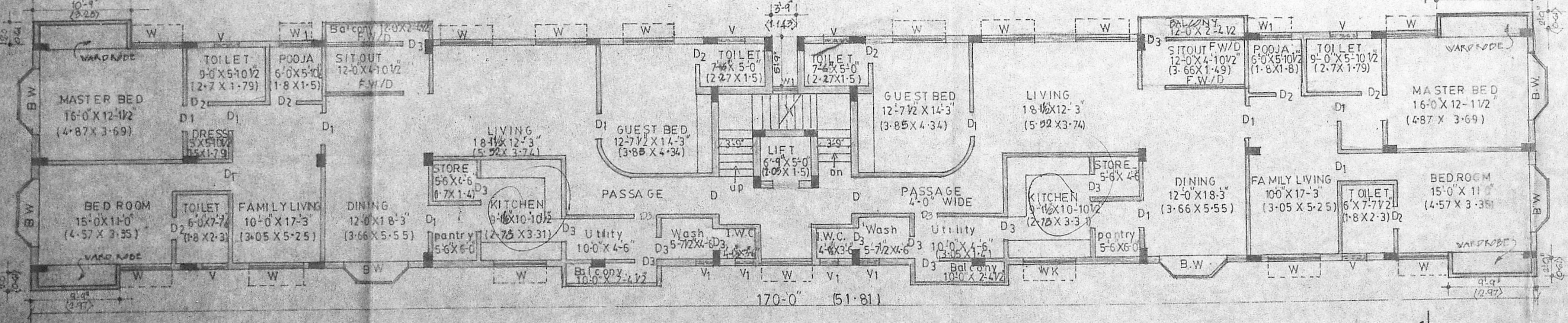
SAISONING AUTHORITY

MMDA TB/PP No. 11/19/2015
 C.No. 11/19/2015
 Assn. No. 11/19/2015
 (POWER AGENT)

Part I
 Part II
 PROPOSED PLANS AT NO. 74 HALLS ROAD
 KILPAUR, MADRAS-10 SURVEY NO. 140/4
 AND 140/2, DIVISION NO. 71
U.P.

SUBMITTED
S.N. PATEL
 LICENSED SURVEYOR NO. 234/1991-92

NAKSHA ARCHITECTS & INTERIOR DESIGNERS
 5, STATE BANK STREET
 MOUNT ROAD
 MADRAS 7.



NAKSHA ARCHITECTS & INTERIOR DESIGNERS
 5, STATE BANK STREET
 MOUNT ROAD
 MADRAS 7.